



Variety Motor Mouth Camp Parents & Carers Information Pack



WELCOME TO THE JUNGLE

Sunshine Coast 2026
6 - 8 November



Table of Contents

WELCOME

EVENT DETAILS

CAMP INFORMATION

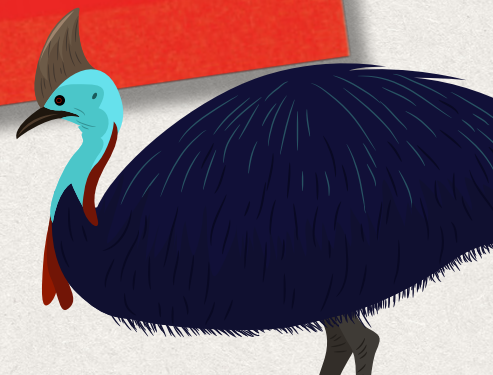
ACCOMMODATION

ACCESSIBILITY

CODE OF CONDUCT

FAQ

Helping Kids
Be Kids



- CAMP CHECKLIST
- Clothes
 - Water Bottle
 - Hat
 - Sun Screen
 - iPad



Welcome to the 2026 Variety Motor Mouth Camp

We are thrilled to welcome participants and their families to join us for three days of learning, connection and fun.

The Variety Motor Mouth Camp is designed for children who use Augmentative and Alternative Communication (AAC) systems, and their families. AAC includes any form of communication other than speech, used to support or replace spoken communication.

Through a range of fun, supported activities, children are encouraged to develop their AAC skills, while families build confidence using AAC together.

This three-day camp is open to children aged 6 to 17 and is delivered by Variety Queensland with the support of teachers

and experienced AAC communicators. The camp also offers one-on-one support from occupational therapists and speech therapists. Which Variety covers the cost for you and your family to attend.

MMC is a wonderful camp created with the whole family in mind. We encourage you to bring the participants' siblings. We will have dedicated activities for siblings around the venue while the participant attends their own sessions.

This year our theme is Welcome to the Jungle, and you will see this woven through the entire camp. Activities, decorations, group games and evening sessions will all include playful jungle inspired elements to help create an immersive and imaginative experience for every child.

We require a 1:1 ratio of caregivers to children. For example, two children must be accompanied by two adults. Families are welcome to have two parents attend with their one child.

PLEASE NOTE:

THIS IS NOT A RESPITE CAMP. ALL PARTICIPANTS, INCLUDING PARENTS AND CARERS, ARE EXPECTED TO ENGAGE IN CAMP.

IF YOUR CHILD REQUIRES PERSONAL CARE SUPPORT, YOU MUST BRING YOUR OWN NDIS REGISTERED CARER OR NURSE.

VOLUNTEERS WILL BE AVAILABLE TO ASSIST WITH CASUAL ACTIVITIES FOR ALL PARTICIPANTS.



Event Details

This year's Variety Kids Camp will be held at the **Sunshine Coast Recreation Precinct.**

The Sunshine Coast Recreation Precinct offers accommodation and outdoor recreation for community, school, sporting and family groups. The precinct is located between Currimundi Beach and the mouth of the Currimundi lake.

Dates and Times

6 - 8 November, 2026

Address

Sunshine Coast
Recreation Precinct,
80 Currimundi Road,
Currimundi Qld 4551

Applications Key Dates

Open: 1 July, 2026

Close: 31 July, 2026

Outcome Application Notification

Mid August via email

Phone

(07) 3907 9300

Email

kidssupport@varietyqld.org.au



**DID SOMEONE
SAY BEACH
ACCESS!!!**



Let's create something special for the kids.



Important disclaimer

This camp is free for families to attend, but it represents a significant cost to Variety. When families cancel at the last minute, we still incur these expenses and we are unable to offer the place to another child who may be waiting. We kindly ask that you only submit an application if you are confident, you can attend the camp dates.

If you withdraw within two weeks of the camp, for reasons other than unavoidable circumstances, you may be asked to cover the costs that Variety has already incurred.

Our team is here to help with questions, support, accessibility needs, and applications. Please refer to contact details.



Camp Information

A full itinerary will be sent once your place at camp is confirmed, but here is a sneak peek of the types of activities at camp.

These will all be adapted to suit the jungle theme and the needs of the campers.

- Group games and confidence-building activities
- Creative arts and craft
- Nature and sensory exploration
- Early evening activities for families
- Quiet options for children who prefer a calmer environment

Every activity is designed with accessibility, safety, and enjoyment in mind.



CAMP REGISTRATIONS WILL RUN FROM 11:30AM - 12:15PM ON FRIDAY!



Please allow extra travel time during school holidays.

Meals

All meals will be provided. Dietary information collected in the application will be provided to the venue. We will notify you if we need clarification or cannot cater to your dietary requirements.

Parking

The precinct has onsite parking for over 60 vehicles with dedicated accessibility spaces.

First Aid

We will have a dedicated first aid officer appointed and available 24/7 throughout the camp. Their contact details will be shared with all families. Basic first aid will be available for minor needs, and we will communicate openly about any concerns or changes. For any serious concerns, emergency services will be engaged according to the venue emergency procedures, which will be briefed to participants.

In the application, you can specify any medical needs, outline sensory needs, equipment needs, feeding and personal care needs, accessibility preferences, and emergency planning. These will be shared with our first aid officer.



IN CASE OF AN EMERGENCY OR IF UNSURE, FAMILIES ARE ENCOURAGED TO CALL 000 DIRECTLY.

Accommodation

All families and volunteers will be staying in the Shelly's accommodation block during camp. The facility includes accessible rooms, nearby parking with accessible spaces, and clear pathways that make moving between areas easy.

Shellys offers calm and comfortable rooms with a mix of single beds and bunk beds. Each unit includes its own bathroom, a small kitchen space. The layout supports families who may need a little extra space, quieter moments, or simple food preparation.

The building is designed to be accessible for children and adults with different mobility needs.

Please indicate your accommodation requirements and preferences in your application. Due to limited space, some sharing may be required. We'll do our best to meet your preferences and will let you know if this isn't possible.

All rooms can fit a wheelchair, but we have limited cabins with wheel chair friendly bathrooms. A separate accessible bathroom with a shower and toilet is available for anyone to use.



BEDDING PROVIDED BY THE VENUE

- SHEETS
- BLANKETS (THIN)
- PILLOWS
- PILLOWCASES
- TOWELS

THE SUNSHINE COAST CAN BE COOL, PLEASE BRING EXTRA BLANKETS IF REQUIRED.



Accessibility

The Sunshine Coast Recreation Precinct at Currimundi offers a range of accessible features that support different needs. This general information may help with early planning.

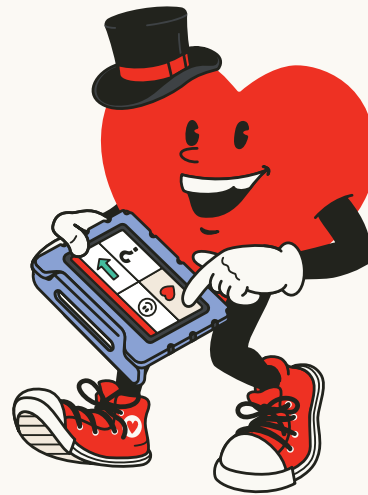
- Step free access to all main activity areas
- Accessible bathrooms within accommodation
- Parking near accommodation
- Flat paths around key spaces
- Indoor and outdoor spaces
- Dining hall with accessible seating
- Quiet zones
- Support staff available throughout camp
- Beach access

There are a limited number of fully wheelchair accessible rooms. These rooms include:

- Grab bars
- A shower with a bench
- Room to manoeuvre mobility equipment

Sensory Space

We understand that the camp environment can sometimes be a bit overwhelming, so we have a dedicated 'Sensory Space' for any campers that feel like they might need some quiet time. It is air-conditioned, private, and stocked with various equipment to help participants take a breather.



Virtual Tour

Scan the QR code to take a virtual tour of the Sunshine Coast Recreation Precinct before you arrive and get a feel for the spaces, facilities, and surroundings ahead of time. It is a great way to familiarise yourself with the venue, plan your visit, and arrive feeling confident and prepared.



Visual Story

The Sunshine Coast Recreation Precinct has created a visual story to help you know what to expect before you arrive. This walkthrough offers a clear snapshot of the spaces, surroundings and key areas, allowing you to familiarise yourself with the venue ahead of time and prepare with confidence.

Camp Code of Conduct



To ensure a safe, inclusive, and enjoyable experience for everyone, we ask all parents or caregivers, participants, volunteers, staff, and visitors to follow this Code of Conduct:

BE RESPECTFUL

- Be kind, inclusive, and supportive of others
- Listen to camp leaders and follow instructions
- Celebrate differences and treat everyone equally

STAY SAFE

- Remain within designated camp areas at all times or advise staff
- Use sports equipment safely and responsibly
- Report any injuries, unsafe behaviour, or concerns to a Team or Camp Leader immediately

COMMUNICATE

- Use respectful language
- Bullying, teasing, or exclusion will not be tolerated
- Speak up if you see someone being treated unfairly

BE RESPONSIBLE

- Take care of your belongings and camp property
- Clean up after yourself and help keep the camp tidy
- Be on time and participate with a positive attitude

HAVE FUN

- Try new things, cheer on your teammates, and enjoy every moment
- Encourage others and celebrate everyone's achievements
- Make memories and friendships that last

PLEASE NOTE

Variety QLD reserves the right to ask any participant to leave the camp if they do not follow the Code of Conduct. This is to ensure the safety and wellbeing of all campers and staff.



**Supporting
kids to live,
play and
dream.**

FAQ



Can I come for the day activities only?

Yes, we welcome day campers! Please indicate this preference in your application.

What meals are provided?

All meals will be provided during our camp and catered to your indicated dietary needs. We will notify you if we are unable to accommodate your exact needs. Each room has a bar fridge to store any temperature sensitive foods and medications.

Is accommodation provided?

Yes, accommodation is provided. Shelly's offers calm and comfortable rooms with a mix of single beds and bunk beds. Each unit includes its own bathroom and a small kitchen space. The layout supports families who may need a little extra space.

I need a wheelchair accessible room. Is that possible?

Please ensure you indicate your rooming requirements on your application. We will do our best to accommodate you where possible.

Is bedding included?

Yes, a linen pack is provided (pillow, towel, sheets, blanket). You're welcome to bring personal items for extra comfort or warmth.

What is the role of volunteers at the camp?

Their role is to assist Variety staff with the smooth running of the camp and to help create a positive experience for all participants. This includes encouraging campers, interacting during group sessions, helping with set up, and supporting the general flow of the program. Volunteers at the Variety Kids Camp are fully vetted and must hold a current Blue Card.

Volunteers are not responsible for the personal care or supervision of any child. Parents or carers remain responsible for their child's care, support, and safety at all times throughout the camp.

For the safety of all participants, volunteers must never be alone with a camper.

Will I be required to share a room with another family?

No all families will be provided with their own room.

What should we bring?

A packing list will be provided once your place is confirmed. All required medication, suitable clothing, toiletries, comfort items, and any personal care equipment should be brought with you.

Is there a uniform?

There is no formal camp uniform. Camp shirts will be provided as part of the registration process. The theme is also Welcome to the Jungle so please feel free to add accessories and theming to your outfits if you wish.

Is there a laundry onsite?

Yes, free laundry facilities are available (BYO detergent)

Will there be a hoist onsite?

The venue does have a hoist that can be booked, but we recommend bringing your own where possible as we cannot guarantee the condition and availability of the hoist. There is plenty of space to store hoists in your room.

FAQ



Are shower chairs available?

There are limited shower chairs available through the venue, please indicate in your application if one is required and we will do our best to accommodate.

How will you communicate updates?

Email is our main method of contact before camp. Please check that our emails are not landing in junk folders.

Can the camp meet my child's needs?

Yes. Once families submit their information, our team reviews every need and will contact you if clarification is needed.

Can siblings attend?

Yes, siblings are welcome to attend the camp. Some activities through the camp will be run separately for the siblings.

What happens if we need to leave in an emergency?

You can leave anytime, but please inform the camp leader.

What happens if my child becomes overwhelmed or tired?

That is completely okay. You can take a break at any time. A dedicated quiet and sensory space is available, and you're welcome to step out of any activity whenever needed.

Will there be free time to explore the area?

Yes. We have programmed a generous amount of free time into the agenda to allow for families to rest and explore the local area. We understand that you may sometimes want a break, and we encourage parents and carers to do whatever works best for their participant.

Is the camp fenced or secure?

The precinct is partially fenced but not fully secured. Parents and carers are responsible for supervising their child at all times.

What is the phone reception like?

Reception at the Sunshine Coast Recreation Precinct is generally good, but can vary between providers. Free Wi-Fi is available.

Will my child be photographed?

Variety will have a media person on-site to capture photos to share the magic of camp. You can choose to opt out of photos in your application. We always respect your preferences and will identify those who do not wish to be photographed to our media team.

What happens in bad weather?

We have a full wet weather plan and plenty of indoor activity spaces. All outdoor sessions can be moved, adapted, or replaced.



If you have any further questions please contact a member of our Kids Support Team.

Anything else I should know?

- This camp is a dry camp. No alcohol is permitted to be consumed during the camp by any attendees.
- Families are welcome to participate in activities at their own pace. There is no obligation to join in if something does not feel right for you or your child. We understand that you may sometimes want a break, and we encourage parents and carers to do whatever works best for their participant. For safety reasons, we simply ask that parents keep our team updated on their whereabouts if they choose to step away from a session.
- An information session will be held for all successful applicants, which will provide further information and allow for questions to be asked. We ask that you please do your best to attend this session.



Variety - the Children's Charity

We make sure children who are sick, experiencing disadvantage or living with disabilities can access the care and opportunities they deserve.

OUR VISION

A world where **every child** can thrive, belong, and reach their full potential, regardless of disability or circumstance.

OUR MISSION

We empower children who are sick, experiencing disadvantage, or living with disabilities through life-changing programs that provide **medical care, mobility, education, and support** to live without limits.



**A place to
connect,
belong and
grow.**



Variety - the Children's Charity of Queensland

- W** variety.org.au/qld
- P** (07) 3907 9300
- f** VarietyQLD
- @** varietyQLD
- in** [variety-the-childrens-charity-qld](https://www.facebook.com/variety-the-childrens-charity-qld)
- d** varietyQLD

